

MBPCX 25 T4 0,18kW

Series general data MBPCX



MANUFACTURING FEATURES

- Antistatic PE-el housing.
- Forward curved impeller in PP plastic.
- Motor support made of rolled steel sheet with epoxy powder finishing coat.
- Stainless steel nuts and bolts.
- Standard asynchronous squirrel-cage motor, IP-55, class F insulation. Standard voltages 230/400V 50Hz. Equipped with II2G Eex-d motors

APPLICATIONS

Designed for inline installation, they are suitable for:

- Corrosive air transport.
- Chemical and petrochemical industry.
- Laboratories and gas cabinets.
- General ventilation in closed environments classified as ATEX zone 2.
- Maximum working temperature: 50°C.

UNDER REQUEST

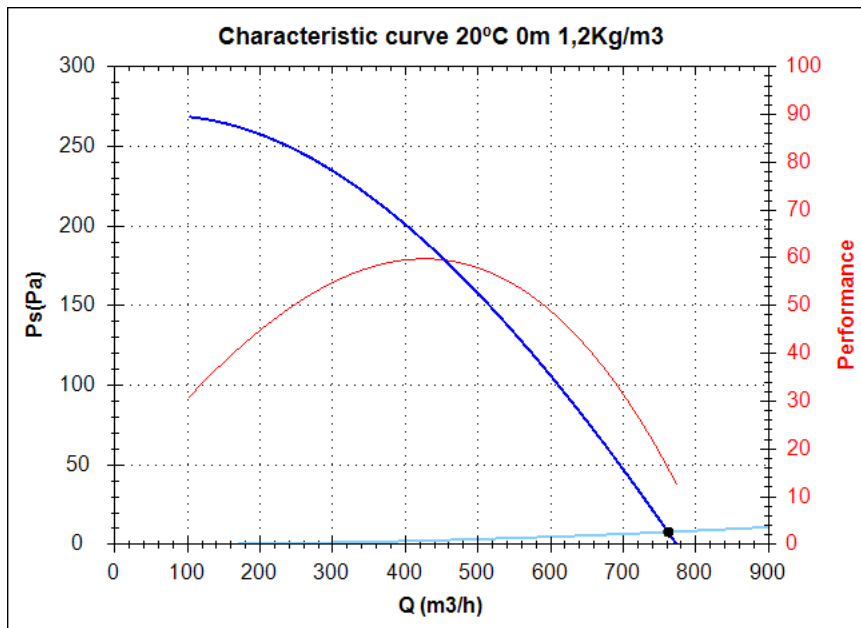
- 60Hz fans and special voltages fans.
- Stainless steel motor support.

In compliance with the 94/9/CE Directive. ATEX II2G built. Certified II3G with certified ATEX EEx-d II2G motor for areas 2 (gas) or 22 (dust).

Series accessories MBPCX



Characteristic curve



Design point

Q (m3/h)	762,65
Ps(Pa)	7,88

Service point

Impeller rpm	1400
Max. temp.(°C)	50
Q (m3/h)	761,76
Ps(Pa)	7,86
Pd(Pa)	66,35
Pt(Pa)	74,21
Air speed(m/s)	10,52
Perf.(%)	16,05

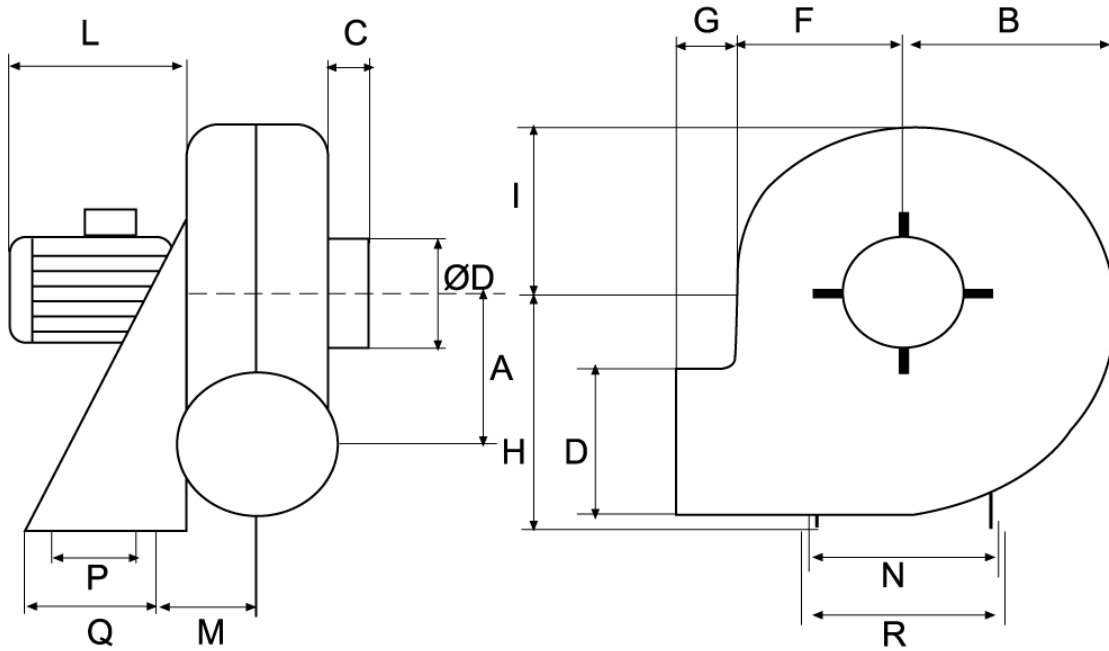
Technical data

Impeller rpm	1400
Motor rpm	1400
Approx. weight(kg)	21
Maximum flow rate(m3/h)	780

Power(kW)	0,18
Imax 230V(A)	1,12
Imax 400V(A)	0,65
Imax 690V(A)	-

MBPCX 25 T4 0,18kW

dimensions diagram



Dimensions (mm)

A=183	B=225	C=40	DØ=160	E=140	F=170	G=80	H=310	I=210	L=183	M=90	N=255
P=100	Q=140	R=290									

Wiring diagram

